

MDS 6000

Multimedia Dispatch Hardware & Software System

Technical Specification

Concurrent voice calls	1,000 / server
GPS data processing per second	1,500 / server
Concurrent SMS per second	200 / server
Video channels (Calls. conference, CCTV, etc.)	100 x 1080P@4M without transcoding 50 x 1080P@4M with transcoding
Concurrent multimedia conference	50 / media server
Participants in one multimedia conference	16
Terminals managed by one client	200,000
Voice channels monitored by one client	140
Radio service access point	100 / gateway server
Video service access point	35 / gateway server

Main Components

PC Workstation

- Standard PC, LCD screen
- Win 10 Pro or above
- Speaker, goose-neck mic or palm-mic with Push-to-talk button
- PC client for all the dispatch and management functions
- USB camera



Multimedia Dispatch System Server

- 2x intel Xeon ES-2650 V4 2.1 GHz or above
- 4*16GB RDIMM, 2400 MT/s, Dual array, x4 bandwidth
- 2*600GB 10K RPM SAS 6Gbps, 2.5 inch hot swappable
- 1~2 intel VCA
- For audio and video processing

Multimedia Gateway

- Access to 2 Radio station from Crosscom and other vendors
- 2 x 100/1000M EI
- Access to Crosscom radio stations for most of existing functionalities
- 4-line E&M to radio station from other vendors for group call only
- Access gateway for Multimedia/Radio gateway
- Independent interconnection gateway between two PMRs



Features

Access to and interconnection between various kinds of narrowband systems and terminals

- Narrowband PMR, e.g., TETRA, DMR, P25, MPT, XPT, UHF, etc
- PSTN, inner PBX
- Legacy phone and SIP phone
- Systems and terminals from different vendors



Rich voice and SMS dispatch functions and control over radios

- Individual call, group call, broadcast call, priority call, emergency call
- Half and full duplex call
- Temporary call group creation, SimulSelect, Crosspatch, DGNA
- Conference call
- Call and radio control: call interruption, call overriding, discreet listening, ambience listening, kill stun, revive,
- Status and text messages

Map-based dispatch

- Real-time update of terminal positions on an integrated GIS-map
- Display of individual/terminal information on map
- Dispatch directly on map
- Terminal track recording and playback
- Geo-fencing
- Circular marquee for group call



Access to CCTV systems for live video viewing

- Access to 3rd party CCTV platforms or directly to CCTV cameras
- Display of VVTC camera positions on a GIS map
- Real time play of CCTV video individually on the map or in a separate multi-tile window



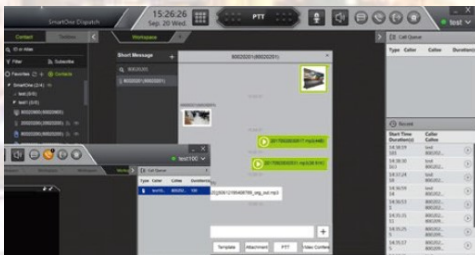
Rich video dispatch functions

- Access to PoC Radio, private LTE Radio, smartphone, body-worn camera.
- Individual video call, Group video call
- Video pull, push, forwarding



Multimedia message

- Images, audio/video clips.
- Individual and group messages



Multimedia conference

- Video source from various kinds of terminal
- Continuous presence, mixing of video sources of diverse resolutions

